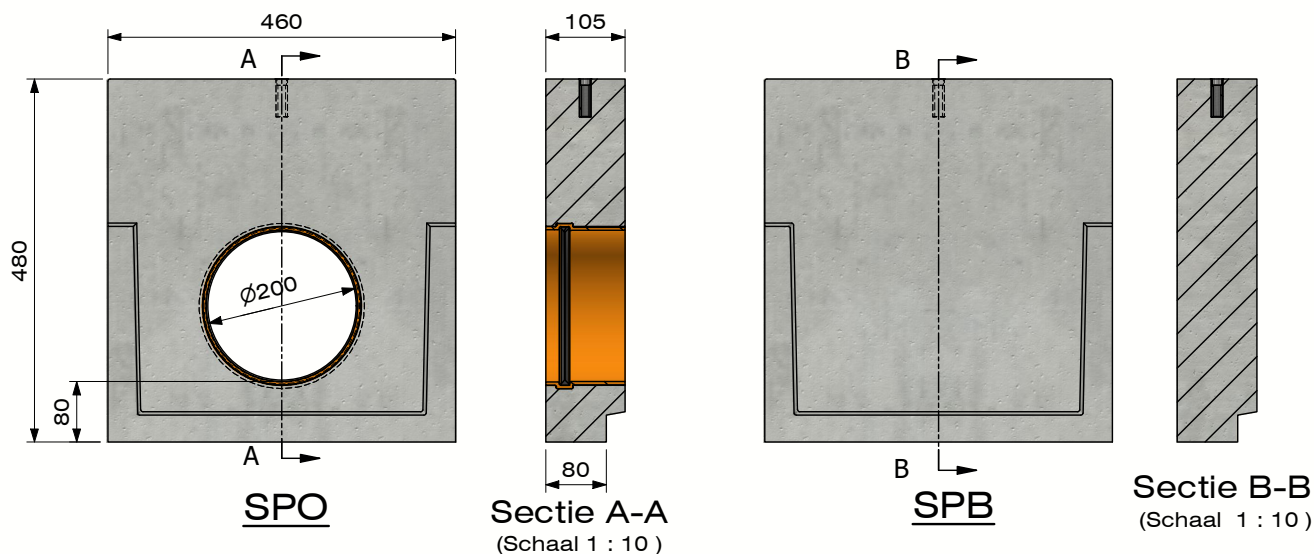
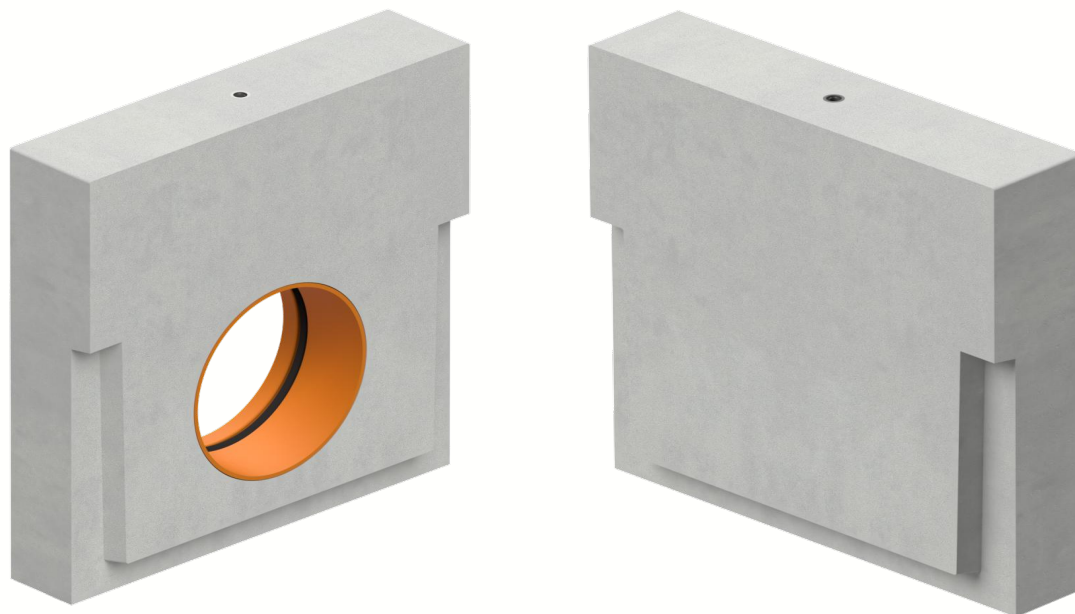



Sluitplaat DELTA-U 300-250-B000 TAND



| | |
|---|--------------------------|
| Belastingsklasse: | N/A |
| Instroomoppervlak cm ² / lm: | N/A |
| Sleufprofieltype: | N/A |
| Randen: | beton |
| Sectie stroomprofiel cm ² : | N/A |
| Betonsterkteklasse: | C60/75 |
| Omgevingsklassen: | XD3-XF4-XC4-XA3 |
| Duurzaamheid: | W+R |
| Werkende lengte: | 100 |
| Helling stroomprofiel: | N/A |
| Helling bovenvlak: | N/A |
| Verbinding: | T/G |
| Hijsvoorziening: | 1 x M12 schroefanker |
| Plaatsingsvoorschrift: | volgens opgave producent |
| Normering: | conform EN1433 |
| Gewicht: | 47 Kg |



B.P.M.N. SA
Chaussée de namur 2 , B-5150 Floriffoux

| | | | |
|------------|---------------------------------------|--------------|------------|
| Project : | Accessoires & supplementen | | |
| Art. nr. : | DELTA-U300250B000SP-TAND | | |
| REV. nr. : | 0 | REV. Datum : | 23/11/2021 |

