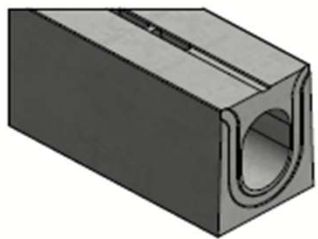
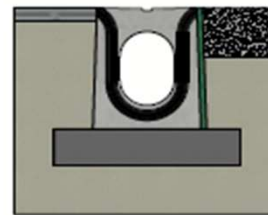


# DELTA-O slot channel DN200-300 - serie BB - Type I



EPDM pressure joint



Installation guidelines Type I  
(consult our detailed instructions)



|  |                             |
|--|-----------------------------|
| Load class:                            | D400-E600-F900 of EN1433    |
| Absorption surface cm <sup>2</sup> /m: | 148                         |
| Slot type:                             | concrete                    |
| Edges:                                 | concrete                    |
| Section cm <sup>2</sup> :              | 531                         |
| Concrete type:                         | C60/75                      |
| Environmental class:                   | XD3-XF4-XC4-XA3             |
| Durability:                            | W+R                         |
| Length:                                | 2000                        |
| Slope:                                 | 0                           |
| Gradient surface:                      | centric 1%                  |
| Connection type:                       | pressure joint              |
| Lifting:                               | 2 x lifting key             |
| Installation guidelines:               | specifications manufacturer |
| Standard:                              | in conformity with EN1454   |
| Weight kg:                             | 675                         |





**Technical datasheet**

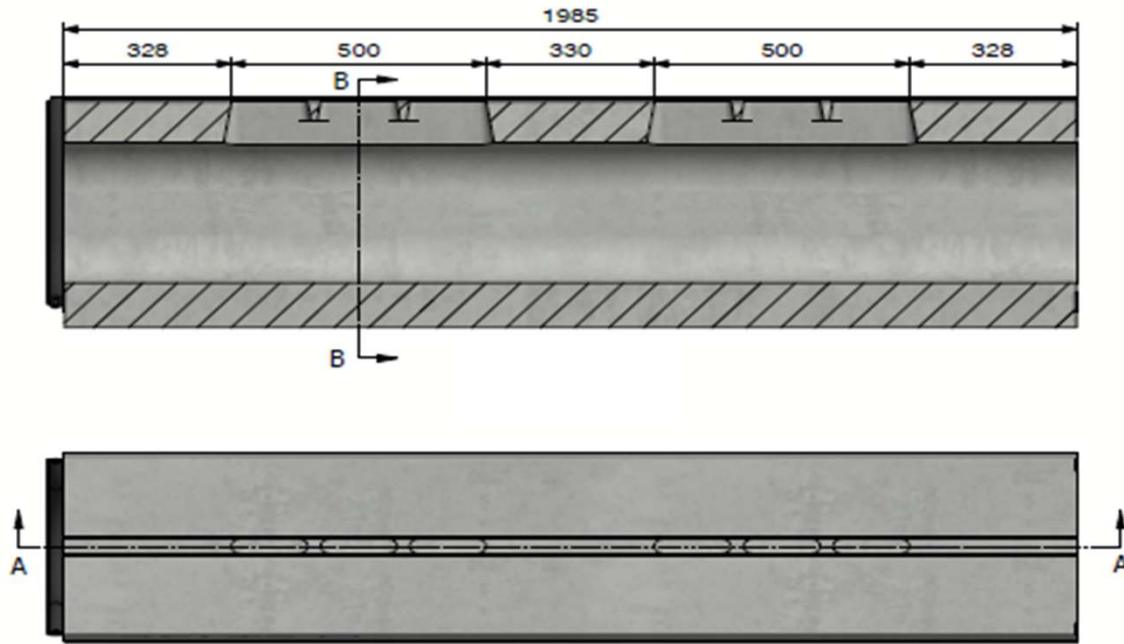
|          |                  |           |            |
|----------|------------------|-----------|------------|
| Art. n°: | DELTA-O2032000BB |           |            |
| Rev.n°:  | 0                | REV.Date: | 05/04/2023 |





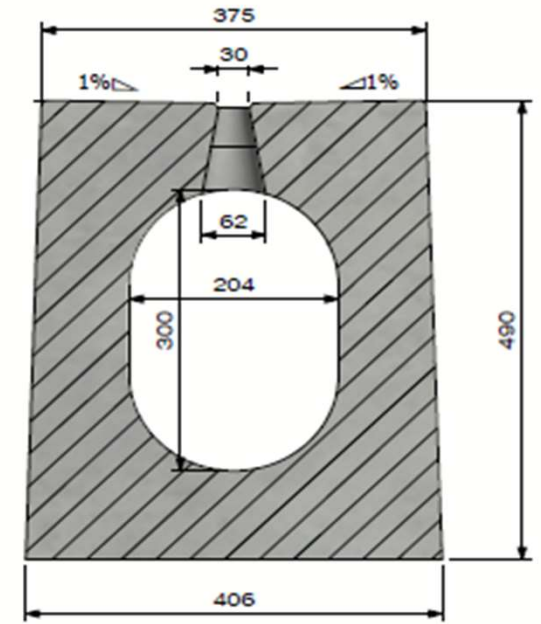


# DELTA-O slot channel DN200-300 - serie BB - Type I



- GIR optional:

- Integrated inspection grating
- D400-E600
- Sealable
- Bottom drain optional



View B

## DELTA O

**DE BONTE GROUP** PUSHING CONCRETE FURTHER

**Technical datasheet**

|          |                  |                      |
|----------|------------------|----------------------|
| Art. n°: | DELTA-O2032000BB |                      |
| Rev.n°:  | 0                | REV.Date: 05/04/2023 |