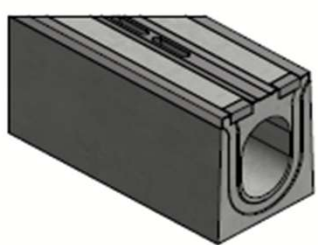
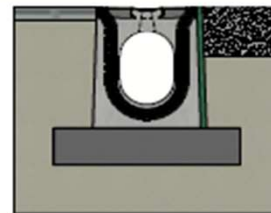


# DELTA-O slot channel DN200-300 - serie SS - Type I



EPDM pressure joint



Installation guidelines Type I  
(consult our detailed instructions)



Load class:	D400-E600-F900 cf EN1433
Absorption surface cm <sup>2</sup> /m:	148
Slot type:	steel
Edges:	steel
Section cm <sup>2</sup> :	531
Concrete type:	C60/75
Environmental class:	XD3-XF4-XC4-XA3
Durability:	W+R
Length:	2000
Slope:	0
Gradient surface:	centric 1%
Connection type:	pressure joint
Lifting:	2 x lifting key
Installation guidelines:	specifications manufacturer
Standard:	in conformity with EN1456
Weight kg:	689





**Technical datasheet**

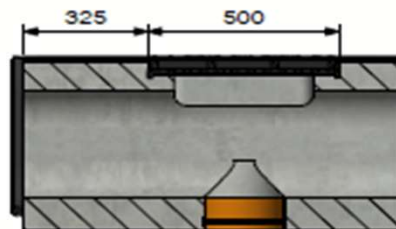
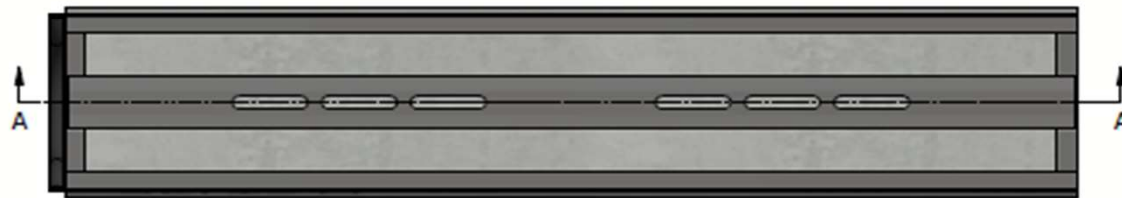
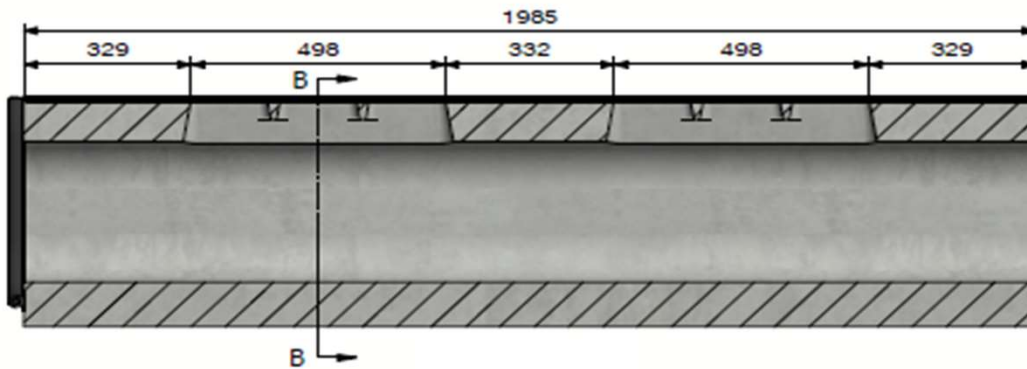
Art. n°:	DELTA-O2032000SS		
Rev.n°:	0	REV.Date:	05/04/2023





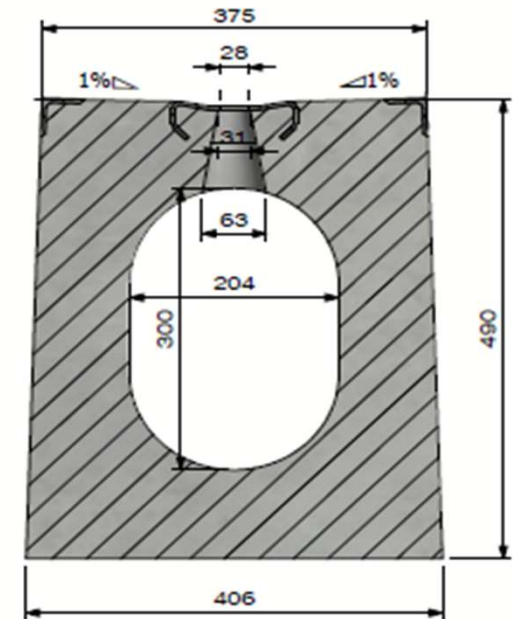


# DELTA-O slot channel DN200-300 - serie SS - Type I



- GIR optional:

- Integrated inspection grating
- D400-E600
- Sealable
- Bottom drain optional



View B

<b>DELTA O</b>	
 PUSHING CONCRETE FURTHER	
<b>Technical datasheet</b>	
Art. n°:	DELTA-O2032000SS
Rev.n°:	0
REV.Date:	05/04/2023