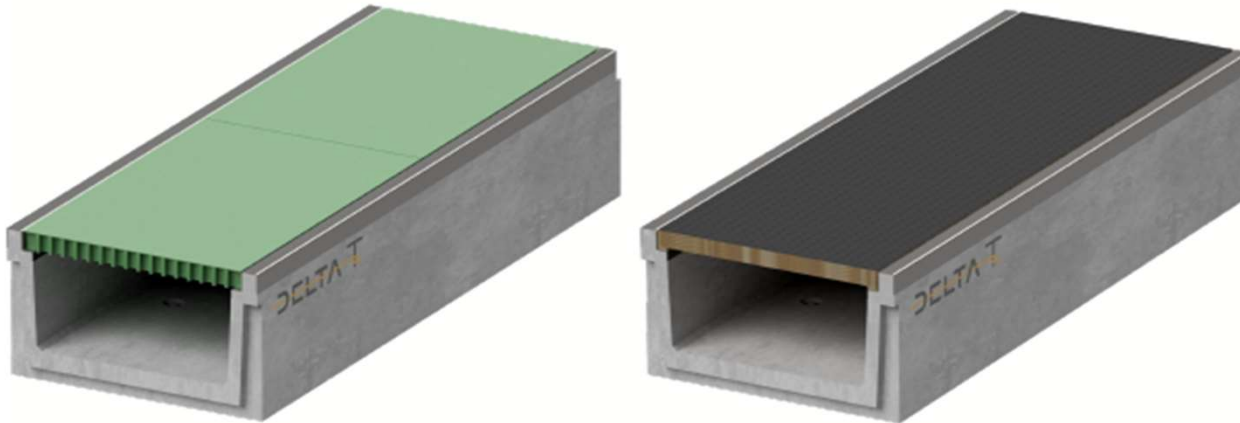
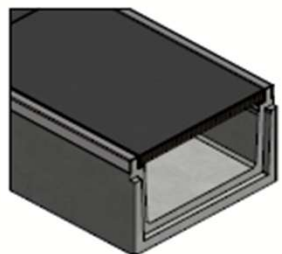


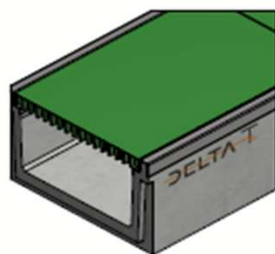
DELTA-T CHANNEL 600x300 SERIE G060 TYPE I



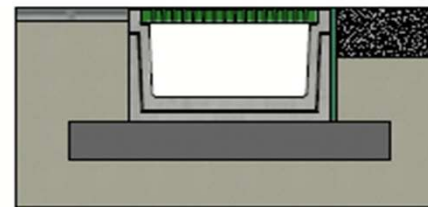
Load class:	B125-C250 of EN1433
Absorption surface cm ² /m:	N/A
Slot type:	N/A
Edges:	galvanised steel
Section cm ² :	1800
Concrete type:	C60/75
Environmental class:	XD3-XF4-XC4-XA3
Durability:	W+R
Length:	2000
Slope:	0
Gradient surface:	N/A
Connection type:	Tongue and groove
Lifting:	4 x DH 1,3T
Installation guidelines:	specifications manufacturer
Standard:	tested according EN1436
Weight kg:	694



B125: Plywood



C250: FRP



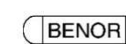
Installation guidelines Type I
(consult our detailed instructions)

DELTA T

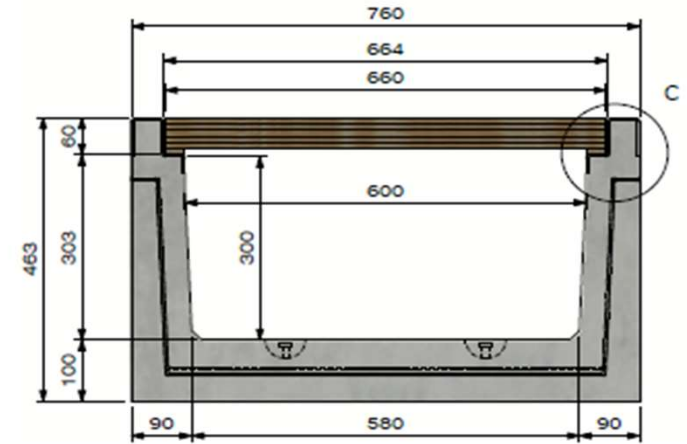
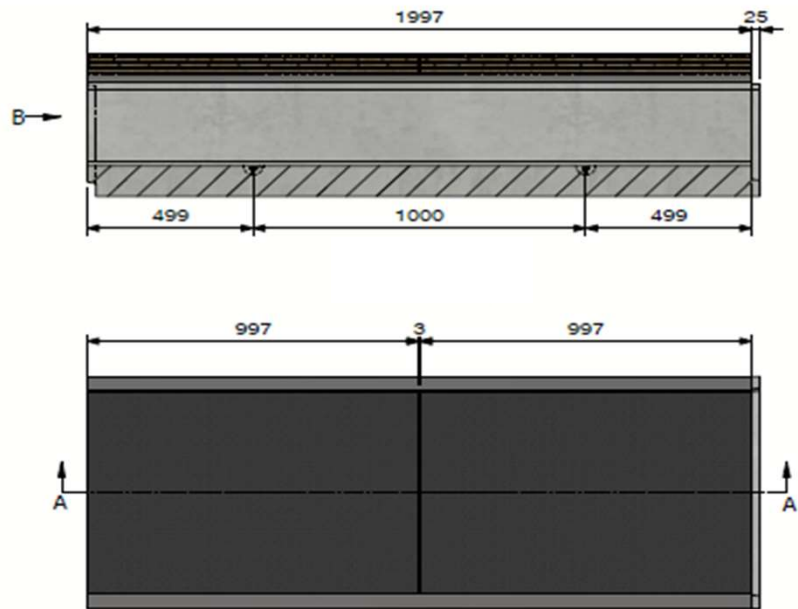


Technical datasheet

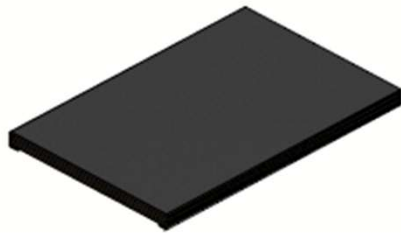
Art. n°:	DELTA-T6003002000G060		
Rev.n°:	0	REV.Date:	05/04/2023



DELTA-T CHANNEL 600x300 SERIE G060 TYPE I



View B



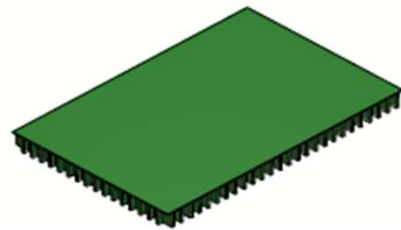
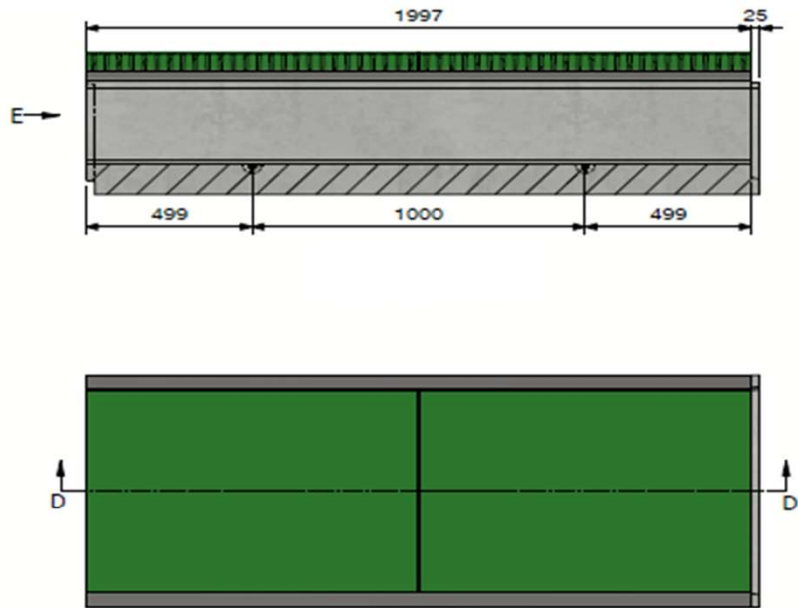
B125: Plywood



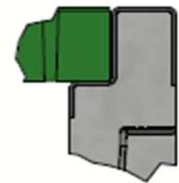
Detail C

DELTA T	
 DE BONTE GROUP PUSHING CONCRETE FURTHER	
Technical datasheet	
Art. n°:	DELTA-T6003002000G060
Rev.n°:	0
REV.Date:	05/04/2023
 	

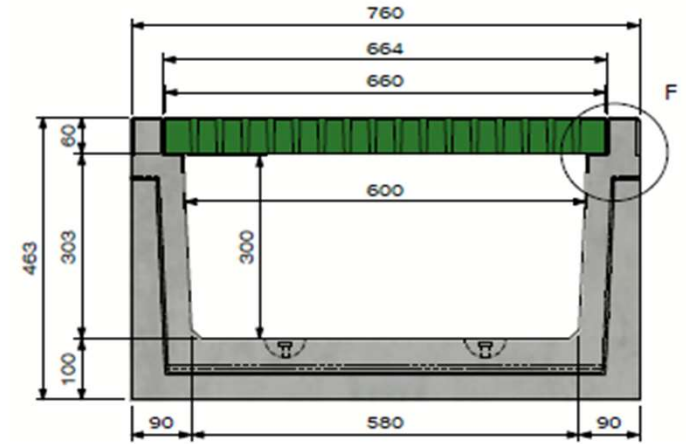
DELTA-T CHANNEL 600x300 SERIE G060 TYPE I



C250: FRP



Detail F



View B

DELTA T	
 DE BONTE GROUP PUSHING CONCRETE FURTHER	
Technical datasheet	
Art. n°:	DELTA-T6003002000G060
Rev.n°:	0
REV.Date:	05/04/2023
 	