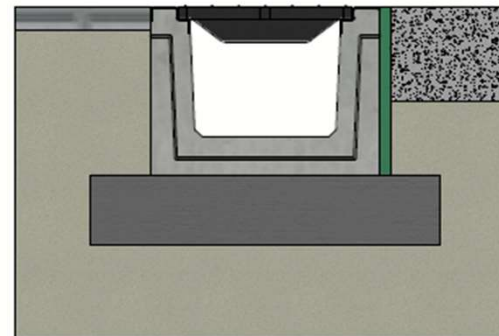
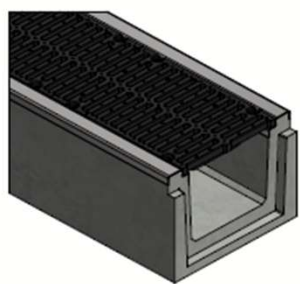



# DELTA-U CHANNEL with CAST IRON GRATING 300x250 SERIES G025 TYPE I




Load class:	D400-F900 cf EN1433
Absorption surface cm <sup>2</sup> /m:	N/A
Slot type:	N/A
Edges:	galvanised steel
Section cm <sup>2</sup> :	750
Concrete type:	C60/75
Environmental class:	XD3-XF4-XC4-XA3
Durability:	W+R
Length:	2000
Slope:	0
Gradient surface:	N/A
Connection type:	Tongue and groove
Lifting:	4 x DH 1,3T
Installation guidelines:	specifications manufacturer
Standard:	in conformity with EN1433
Weight kg:	501



Installation guidelines Type I  
(consult our detailed instructions)








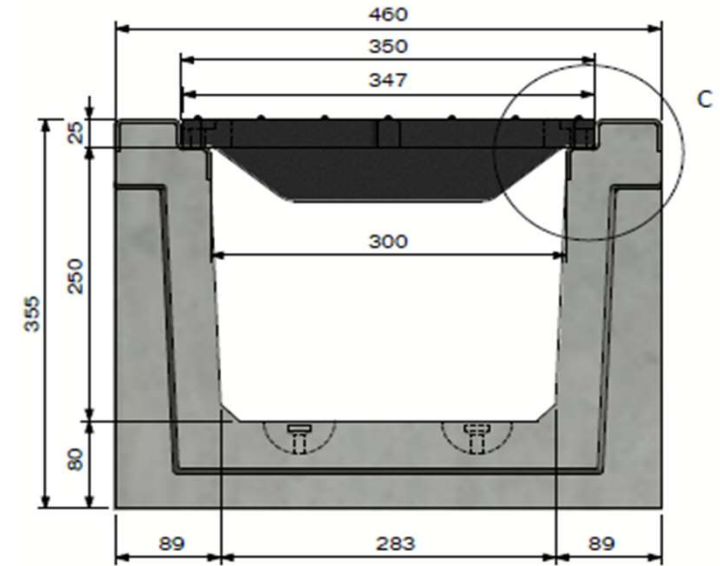
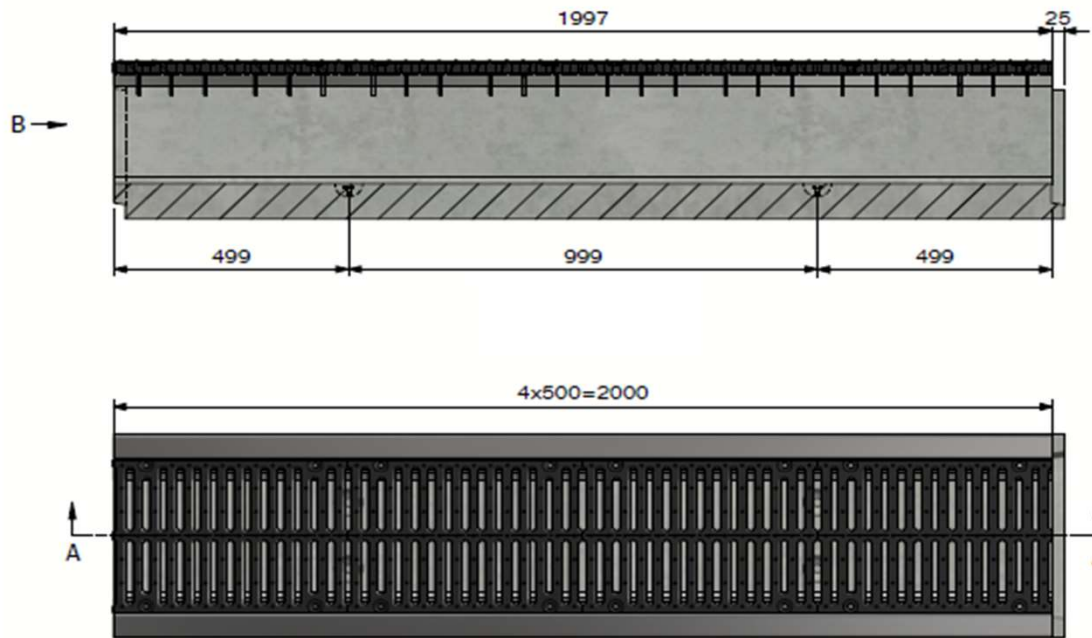
---

**Technical datasheet**

Art. n°:	DELTA-U3002502000G025		
Rev.n°:	0	REV.Date:	05/04/2023

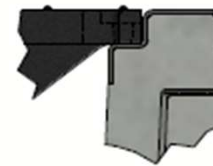
# DELTA-U CHANNEL with CAST IRON GRATING 300x250 SERIES G025 TYPE I




View B




D400 : DELTA-U300D500IS025D-DR  
F900 : DELTA-U300D500IS025F-DR



Detail C





**Technical datasheet**

Art. n°:	DELTA-U3002502000G025	
Rev.n°:	0	REV.Date: 05/04/2023

